

# Summer 2018



**GSA**  
est. 1935  
UNIVERSITY OF SURREY



Federation of  
Drama  
Schools



27 APRIL

---

**Tickets:** £15 / concessions £13

---

**Online:** [gsauk.org/events](http://gsauk.org/events)

---

**Tel:** 01483 686876

---

**At the theatre:** 10am – 6pm Mon-Fri

**BELLAIRS THEATRE, IVY ARTS CENTRE**

Foundation Acting 2018

## When We Were Young

| An evening of scenes from contemporary plays.

Director **Michael Toumey**

28 APRIL

---

**Tickets:** £15 / concessions £13

---

**Online:** [gsauk.org/events](http://gsauk.org/events)

---

**Tel:** 01483 686876

---

**At the theatre:** 10am – 6pm Mon-Fri



**BELLAIRS THEATRE, IVY ARTS CENTRE**

Foundation Musical Theatre 2018

## Growing Up and Moving On...

| An original revue which takes an affectionate look  
at the past, the present and the future.

Director **Gerry Tebbutt**

**6 MAY**

---

**Tickets:** £15 / concessions £13

---

**Online:** [electric.theatre/shows/gsa-singers-go-distance/](http://electric.theatre/shows/gsa-singers-go-distance/)

---

**Tel:** 01483 501200

---

**At the theatre:** 10am – 6pm Mon-Fri

---

**THE ELECTRIC THEATRE**

GSA Singers 2018

**Go the Distance**

Back for their annual shows the GSA Singers launch this year's talented cohort at a fantastic concert comprising an eclectic selection songs from every genre from pop to operetta and from musicals old and new. Songs you know and some you won't, songs to make you laugh and even make you cry. Don't miss this once a year opportunity to see the GSA Singers.

Musical Director **Peter Roberts**

14 MAY

---

**Tickets:** £15 / concessions £13
 

---

**Online:** [gsauk.org/events](http://gsauk.org/events)


---

**Tel:** 01483 686876
 

---

**At the theatre:** 10am – 6pm Mon-Fri
 

---



## BELLAIRS THEATRE, IVY ARTS CENTRE

3rd Year BA Musical Theatre

### Musical Theatre Showcase 2018

An opportunity to preview the work performed by third year BA Musical Theatre students in a unique showcase prior to a performance for industry professional in London's West End later that week.

Director **Julian Woolford**

Musical Director **Peter Roberts**

Choreographer **Heather Douglas**

31 MAY - 2 JUNE

---

**Tickets:** £15 / concessions £13
 

---

**Online:** [gsauk.org/events](http://gsauk.org/events)


---

**Tel:** 01483 686876
 

---

**At the theatre:** 10am – 6pm Mon-Fri
 

---



## PATS STUDIO THEATRE

MA Acting

### Pride and Prejudice

By **Jane Austen**

Adapted by **Sara Pascoe**

“  
*She [Pascoe] delights in Austen's wit*

”

#### The Stage

Perhaps the most famous love story our country has ever produced, yet the women don't work, the servants don't speak, and who cares how filthy rich Mr Darcy is when he is so arrogant and rude? Georgian England was a world where men had property whilst women had smelling salts and piano lessons. Lucky them! Elizabeth Bennet is witty and clever, has terrible manners and muddy shoes. But with no independence, is her ending actually happy?

A brand new comic adaptation by stand-up comedian Sara Pascoe brings audiences a playful, truthful and occasionally disrespectful\* take on this brilliant novel.

Director **Emma Bernard**

*An amateur performance by arrangement with **Samuel French Limited***



7 - 9 JUNE

---

 Tickets: £15
 

---

 Online: [yvonne-arnaud.co.uk](http://yvonne-arnaud.co.uk)


---

 Tel: 01483 440000
 

---

 At the theatre: 10am – 8pm Mon-Sat  
 [6pm on non-performance days]
 

---

*\*ALL ticket prices include £1 Restoration Levy, plus a £1 booking fee*

## MILL STUDIO, YVONNE ARNAUD THEATRE

2nd Year BA Musical Theatre

### Sweet Charity

 Book by **Neil Simon**

 Music by **Cy Coleman**; Lyrics by **Dorothy Fields** Based on an original screenplay by **Federico Fellini**, **Tullio Pinelli** and **Ennio Flaiano**; Produced for the Broadway stage by: **Fryer, Carr** and **Harris**; Conceived, Staged and Choreographed by **Bob Fosse**

“  
*She's destined to have her heart broken time and again, and so are we watching her.*

” **Mark Shenton**, *The Stage*

Arguably the best known Musical theatre heroines, Charity Hope Valentine is “a girl who wanted to be loved.”

One of the most famous shows by legendary director/choreographer Bob Fosse, *Sweet Charity* boasts a laugh-a-minute script by the incomparable Neil Simon set to Cy Coleman's rhythms and sounds which bring 60's life in New York to life. From a seedy New York dance hall to the Pompeii Nightclub Charity sings, dances, laughs and cries on her search for her happy ever after.

Featuring much loved classics like *Hey, Big Spender* and *Rhythm of Life* among its show-stopping score, *Sweet Charity* captures spirit of the '60s in *There's Gotta Be Something Better Than This!*

“  
*the perfect musical for Donald Trump's America*

” **The Guardian**

 Director **Nicholas Scrivens**

 Choreographer **Phyllida Crowley-Smith**

 Musical Director **Niall Bailey**

*By arrangement with MusicScope and Stage Musicals Limited of New York*

7 - 9 JUNE

---

 Tickets: £15 / concessions £13
 

---

 Online: [gsauk.org/events](http://gsauk.org/events)

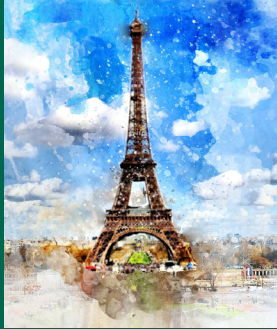

---

 Tel: 01483 686876
 

---

 At the theatre: 10am – 6pm Mon-Fri
 

---



## BELLAIRS THEATRE, IVY ARTS CENTRE

MA Musical Theatre

### Dear World

 Music and Lyrics by **Jerry Herman**; Book by **Jerome Lawrence** and **Robert E.Lee**; Based on *The Madwoman of Chaillot* by **Jean Giraudoux** as adapted by **Maurice Valency**; New Version by **David Thompson**

“  
*features a ravishing collection of character and plot driven songs bursting with drama, tenderness and quirky fun.*

”

**Broadway World**

A mad woman living beneath the streets of Paris, battles with the forces of capitalism and greed above her. Good and evil meet head on in this excursion into French fantasy. This 1969 Broadway musical, written for Angela Lansbury, won her a second Tony Award. This recently revised version is by David Thompson (*The Scottsboro Boys*, *Steel Pier*) and is a rare chance to see this musical from songwriter Jerry Herman, the creator of *Hello Dolly*, *Mame* and *Mack and Mabel*.

 Director **Shaun Kerrison**

 Musical Director **Mary McAdam**

*Presented by arrangement with TAMS-WITMARK MUSIC LIBRARY*

 Director **Nicholas Scrivens**

 Choreographer **Phyllida Crowley-Smith**

 Musical Director **Niall Bailey**

*By arrangement with MusicScope and Stage Musicals Limited of New York*

7 - 9 JUNE

Tickets: £15 / concessions £13

Online: [gsauk.org/events](http://gsauk.org/events)

Tel: 01483 686876

At the theatre: 10am – 6pm Mon-Fri



## PATS STUDIO THEATRE

MA Acting

### The Suicide

By **Nikolai Erdman**Translated by **Peter Tegel**

A brilliant and penetrating satire about an unemployed man who contemplates suicide and is besieged by spokespeople of discontented groups, from butchers to intellectuals, who want him to turn his suicide into a gesture on their behalf. Erdman's genius was recognized by his contemporaries including Brecht, Stanislavsky and Meyerhold. The latter two competed to do *The Suicide*. Stalin gave permission to present the play only after Gorki pleaded with him, but it was not allowed to open following a year of rehearsal.

“

*A masterpiece...Lights up the sky.*

”

The Guardian

Director **Katarzyna Deszcz**

An amateur performance by arrangement with **Samuel French Limited**

14, 15, 16 JUNE

Tickets: £15

Online: [yvonne-arnaud.co.uk](http://yvonne-arnaud.co.uk)

Tel: 01483 440000

At the theatre: 10am – 8pm Mon-Sat  
[6pm on non-performance days]

\*ALL ticket prices include £1 Restoration Levy, plus a £1 booking fee

## MILL STUDIO, YVONNE ARNAUD THEATRE

2nd Year BA Musical Theatre

### Pal Joey

Music by **Richard Rodgers**; Lyrics by **Lorenz Hart**;Book by **John O'Hara**; Music orchestrated by **Hans Spialek**

“

*features one of the most delectable scores of any American musical, and some of the wittiest lyrics*

”

New York Times

*Pal Joey* was ahead of its time and, ultimately, the most successful Rodgers and Hart collaboration, a musical filled with sex, desire, power and money. Based on John O'Hara's popular collection of stories about a truly selfish, shameless man, and featuring well-known numbers like *I Could Write a Book*, *Zip* and *Bewitched Bothered and Bewildered*, the first production in 1940 starred an unknown Gene Kelly. The revival, in 1952, was hailed as the most exciting musical of the season, and won three Tony Awards. Joey is young, naïve, ambitious, a lady-killer and chancer who will do anything to get ahead.

“

*Brilliant, sardonic and strikingly original*

”

New York Herald Tribune

Director **Sean McNamara**Choreographer **Rachael Kerridge**Musical Director **Tom Turner**

By arrangement with **R & H Theatricals Europe**

19 - 30 JUNE

---

**Tickets:** £19.50
 

---

**Online:** [charingcrosstheatre.co.uk](http://charingcrosstheatre.co.uk)


---

**Tel:** 08444 930 650 [Phone lines open  
midday to 6pm, Monday to Saturday]
 

---

*\*There is a £3 booking fee per ticket charged on phone and internet orders, and a 50p Restoration Levy on all tickets. Box office at theatre open to personal callers from two hours before the curtain time for every performance.*

## CHARING CROSS THEATRE

BA Actor Musician

GSA in the West End

# Daisy Pulls it Off

By Denise Deegan

Fresh from a sell-out run at the Bellairs Theatre, the first graduating year of GSA's BA Actor-Musician programme brings this unique production full of quirky characters, splendid scrapes and fabulous friends, to delight West End audiences.

1927 - Daisy Meredith is the first scholarship girl taken from an elementary school to be granted access to the hallowed halls of the prestigious Grangewood School for Young Ladies. Enthusiastic and plucky to the last, Daisy finds herself struggling against unspeakable snobs Sybil Burlington and Monica Smithers, who concoct ghastly schemes to get her expelled. Ably assisted by her new best friend, madcap Trixie Martin, Daisy finds herself caught up in a series of irresistible adventures including the search for missing "Beaumont Treasure". Can Daisy work out the mysterious clues and save the school from closure? What secrets does the enigmatic Mr Scoblowksi hide?

This riotous and affectionate pastiche of a classic girls' school story was a huge West End hit and won the Olivier Award and Drama Theatre Award for Best Comedy when first produced by Andrew Lloyd Webber in 1983.

“

*Daisy Pulls it Off celebrates, with a sly wit and a big heart, an arguably sweeter, more innocent era*

”

International Herald Tribune

Director **Nicholas Scrivens**Music by **Niall Bailey**Musical Staging **Phyllida Crowley Smith**By special arrangement with **The Really Useful Group Ltd**

# DAISY PULLS IT OFF

BY DENISE DEEGAN

19TH-30TH JUNE 2018



BY SPECIAL ARRANGEMENT WITH THE REALLY USEFUL GROUP LTD



**18, 19 MAY****PATS STUDIO THEATRE**

Tickets: £6 / £4 concessions / £2 students/U18

## Company Performances 2018

Over two days in May, GSA Theatre and Performance final year students present work by their own theatre companies. The formation and creative direction of each company has emerged out of the students' own independent and explorative processes, with work ranging from contemporary British drama to new writing to installation-based and devised performance.

For full details of Company performances visit [gsauk.org/events](http://gsauk.org/events)**31 MAY, 1 JUNE****REX DOYLE STUDIO THEATRE**

Tickets: FREE [Donations on exit] Booking is advised

## Theatre Lab

GSA Second year BA Theatre and Performance students present devised work emerging from an explorative 'laboratory' process. Due to the experimental nature of the work, neither form nor content are defined at the project's outset; rather, both emerge organically as part of a practical and reflective enquiry into topical themes and styles of performance that are introduced, unpacked, critiqued and revised over the course of a developmental process.

For full details of Lab performances visit [gsauk.org/events](http://gsauk.org/events)**PLUS***Don't miss the GSA*

## Spring Dance Festival

**19 APRIL - 2 MAY**

Featuring an eclectic array of dance from all gendres and an exciting, inspiring selection of performers

For full details visit [gsauk.org/events](http://gsauk.org/events)



**When We Were Young**

BELLAIRS THEATRE

**April**

<b>Fri 27</b>	5.00	8.00
---------------	------	------

**Growing Up and Moving On...**

BELLAIRS THEATRE

**April**

<b>Sat 28</b>	5.00	8.00
---------------	------	------

**GSA Singers Go the Distance**

ELECTRIC THEATRE

**May**

<b>Sun 6</b>	5.00	8.00
--------------	------	------

**Musical Theatre Showcase 2018**

BELLAIRS THEATRE

**May**

<b>Mon 14</b>	5.00	7.30
---------------	------	------

**Company Performances**

PATS STUDIO THEATRE

**May**

<b>Fri 18</b>		
---------------	--	--

<b>Sat 19</b>		
---------------	--	--

Check [gsauk.org/events](http://gsauk.org/events) for times**Theatre Lab**

REX DOYLE STUDIO THEATRE

**May**

<b>Thur 31</b>	2.00	4.00	6.00
----------------	------	------	------

**June**

<b>Fri 1</b>	12.00	2.00	4.00
--------------	-------	------	------

Check [gsauk.org/events](http://gsauk.org/events) for details**Pride and Prejudice**

PATS STUDIO THEATRE

**May**

<b>Thur 31</b>		7.30
----------------	--	------

**June**

<b>Fri 1</b>		7.30
--------------	--	------

<b>Sat 2</b>	2.30	7.30
--------------	------	------

**Dear World**

BELLAIRS THEATRE

**June**

<b>Thur 7</b>		7.30
---------------	--	------

<b>Fri 8</b>		7.30
--------------	--	------

<b>Sat 9</b>	2.30	7.30
--------------	------	------

**Sweet Charity**

MILL STUDIO, YVONNE ARNAUD THEATRE

**June**

<b>Thur 7</b>		7.30
---------------	--	------

<b>Fri 8</b>		7.30
--------------	--	------

<b>Sat 9</b>	2.30	7.30
--------------	------	------

**The Suicide**

PATS STUDIO THEATRE

**June**

<b>Thur 7</b>		7.30
---------------	--	------

<b>Fri 8</b>		7.30
--------------	--	------

<b>Sat 9</b>	2.30	7.30
--------------	------	------

**Pal Joey**

MILL STUDIO, YVONNE ARNAUD THEATRE

**June**

<b>Thur 14</b>		7.30
----------------	--	------

<b>Tue 15</b>		7.30
---------------	--	------

<b>Sat 16</b>	2.30	7.30
---------------	------	------

**Daisy Pulls it Off**

CHARING CROSS THEATRE

**June**

<b>Tue 19</b>		7.30
---------------	--	------

<b>Wed 20</b>	2.30	7.30
---------------	------	------

<b>Thur 21</b>		7.30
----------------	--	------

<b>Fri 22</b>		7.30
---------------	--	------

<b>Sat 23</b>	3.00	7.30
---------------	------	------

<b>Mon 25</b>		7.30
---------------	--	------

<b>Tue 26</b>		7.30
---------------	--	------

<b>Wed 27</b>	2.30	7.30
---------------	------	------

<b>Thu 28</b>		7.30
---------------	--	------

<b>Fri 29</b>		7.30
---------------	--	------

<b>Sat 30</b>	3.00	7.30
---------------	------	------

## Tickets

### Public and online bookings open:

**Ivy Arts Centre, (Bellairs Theatre and Rex Doyle Studio) and PATS Studio Theatre** - 30th April 2018

**Mill Studio, Yvonne Arnaud Theatre** - 19th March 2018

**Electric Theatre** - 1st April 2018

**Charing Cross Theatre** - 16th April 2018

**Ticket Prices** vary and are detailed under each individual Diary event.

**Group Rates:** For productions at the **Ivy Arts Centre, PATS Studio Theatre** and **Yvonne Arnaud Theatre**, concessionary rates are given to children under 16 years, students, senior citizens, unemployed and party bookings of 10 or more.

**Tickets reserved by telephone at all venues** will be held for 3 working days, subject to availability, unless purchased by Visa/Mastercard.

**Booking fees:** All tickets purchased from **Yvonne Arnaud Theatre** box office are subject to a £1 per ticket Restoration Levy, plus a £1 per ticket booking fee.

All tickets purchased from **Charing Cross Theatre** are subject to a £3 booking fee per ticket charged on phone and internet orders, and a 50p Restoration Levy on all tickets.

## Access

All the above theatres are accessible by wheelchair. Please inform the relevant box office of your requirements when you are booking.

## Latecomers

Latecomers will be admitted at an appropriate break at the discretion of the front of house staff. Latecomers cannot be admitted to the Rex Doyle Studio or PATS Studio Theatre until the interval.



The contents of this brochure are accurate at time of going to press. GSA offers a wide range of performances, symposiums and research events to its schedules. For full details of all events to be held during the Summer please visit [gsauk.org/](http://gsauk.org/) events regularly for updates.

### By road

Take the A322 Woodbridge Road off the A3 and then follow the map.

### By rail

Fast train (Portsmouth Harbour Trains) take 35 minutes to Guildford from Waterloo.

National Rail Enquiries:

**08457 484950**

[www.nationalrail.co.uk](http://www.nationalrail.co.uk)

### 1. GSA, Ivy Arts Centre, Ivy Studio, PATS Studio Theatre, and Lecture Theatre Block

Car Park One, University of Surrey Campus, Stag Hill GU2 7XH

### 2. The Electric Theatre

Onslow Street. Parking in Bedford Road car park

### 3. The Mill Studio, Yvonne Arnaud Theatre

Millbrook. Parking in Millbrook car park

### 4. Charing Cross Theatre [not shown on local map]

Players Bar and Kitchen, The Arches, Villiers Street, London WC2N 6NL


<http://charingcrosstheatre.co.uk/your-visit/location>



Guildford School of Acting  
Stag Hill Campus  
Guildford, Surrey  
GU2 7XH, UK

W: [gsauk.org](http://gsauk.org)

 [twitter.com/the\\_gsa](https://twitter.com/the_gsa)

 [facebook.com/gsauk](https://facebook.com/gsauk)

E: [gsaenquiries@gsa.surrey.ac.uk](mailto:gsaenquiries@gsa.surrey.ac.uk)

T: +44 (0)1483 684040

**GSA**  
est.1935

---

UNIVERSITY OF SURREY